





Icon

2022 PROFESSIONAL MAKEUP ARTIST COURSE

FEATURING
TRAINING
BY INDUSTRY
PROFESSIONALS



ESTABLISHED 2003

FACEBOOK.COM/ICONSCHOOLOFMAKEUP 
INSTAGRAM.COM/ICONSCHOOLOFMAKEUP 
YOUTUBE.COM/MAKEUPBYICON 
PINTEREST.COM/KARENFABULIS 

YOUR CAREER AS A PROFESSIONAL MAKEUP ARTIST STARTS HERE AT ICON SCHOOL OF MAKEUP

If you have always loved makeup and would enjoy the challenge and pleasure of creating beautiful makeup and making others look and feel great then this course is for you.

Our Professional Makeup Artist Course offers you a wide variety of industry relevant education to get you ready to start working as a professional as soon as you graduate. The subjects you cover are those set out in the nationally accredited Certificate III Makeup Artist Course and adds more hands on and specific knowledge about how to work in this fast paced industry.

We have two intakes each year and we offer on-going mentoring during and after your training at ICON as we want to see you succeed like so many of our alumni.

Our ICON trainers and guest lecturers are passionate Makeup Artists currently working in various parts of the industry including Bridal work, Fashion & Beauty, TV, Film and Theatre so you will be in great hands during your training at ICON.

Come and experience the quality training yourself!



www.iconschoolofmakeup.com

Our **ICON alumni**
have worked
on runway
models; created
editorial makeup
for magazines
worldwide & worked
on local films and
major theatre
productions...



Course Description

The course is delivered within a class-room setting through demonstration, detailed instructions and guidance to the group and or the individual. The classroom is purpose designed to simulate working as a makeup artist.

This course is designed to give people who are at school or working full time the opportunity of studying as a makeup artist. Students undertaking this course must be motivated, disciplined and prepared to do homework & assignments as required.

This course will give the student a detailed and fast paced opportunity to learn the skills and gain the knowledge to allow them to work in the following areas as a makeup artist:

- Bridal & Wedding Makeup
- Red Carpet Glamour Looks
- Fashion & Runway Looks
- Day & Evening Looks
- Makeup for Photography & Film
- Remedial Camouflage Makeup for Covering Scars,
- Birthmarks, Tattoos, etc
- Makeup for Male Models and Older Models
- Creative Makeup for Halloween, Theatrical &/or Performance Characters
- and much more!

The course is competency-based learning, that is via observation of the student's ability to demonstrate skills and knowledge. Assessment is via observation during practical work; via professional portfolio photo shoots; via written work & assignments and on successful completion of a final written & practical assessment of each module.

During the course, the student gets to apply the school's makeup on other students and also to be the model, experiencing both roles. During most practical classes, the student will require an external model (e.g. older woman, male model, females suitable for bride and fashion looks, etc)

Also note: Some classes will be given via online group chats.

Course Price

16 Week Course - \$2999

Course Includes

- All notes for course in a Course Booklet
- A Professional Set of Brushes
- Use of the Makeup Kit at ICON School of Makeup whilst training in class
- On-going mentoring & work experience opportunities after you've successfully completed the Makeup Artistry Course @ ICON
- Props for photo shoots are available at ICON for some photo shoots, if required e.g. Bridal Photo shoots.
- Discount links supplied to students for purchasing makeup at various pro makeup brands

Course Purpose

The Professional Makeup Artist Course covers a broad range of subjects that allow the student to potentially achieve employment as a freelance makeup artist working on weddings & fashion photo-shoots, a makeup artist for film and television, or working in a Makeup Store or Pharmacy applying and selling makeup to clients. The opportunities within the makeup industry are varied and can offer an exciting career with dedication and determination to give it a go!

Entry Level Requirements

Students must be proficient in written and spoken English. Students under 18 years of age will require the signature of a parent or guardian before completing enrolment.

Students with learning challenges that may impact their learning at ICON School of Makeup, are invited to advise the School Director on enrolling. In collaboration with our trainers, we can develop a support plan to ensure you experience success in the least restrictive environment.

Interest Free Payment Plans Available

- 16 Week Course - \$2999 on enrolling
- Payment Plan - \$1499 on enrolling, \$500 payable on Week 1, \$100 per week from Week 2 til Week 11
- Extended Payment Plan - \$799 on enrolling, then \$100 from the following week for 22 consecutive weeks.

Additional Costs

- Any stationery required.
- ICON Uniform Apron for use in Class and on out of class events etc \$35
- Photo shoot costs payable to Photographers @ \$20 per photo shoot.
- If School Props require professional cleaning or repairs after being soiled by makeup products or damaged during use at ICON, then the student will be required to pay that cost (\$30 min).

Attendance

90% attendance required to complete course.

Course Dates

Professional Makeup Artist Course (Feb-May)

Monday 7 February to Wednesday 25 May 2022
16 Weeks - Monday & Wednesday Evenings (6pm-9pm)

Professional Makeup Artist Course (Aug-Nov)

Monday 8 August to Wednesday 23 November 2022
16 Weeks - Monday & Wednesday Evenings (6pm-9pm)

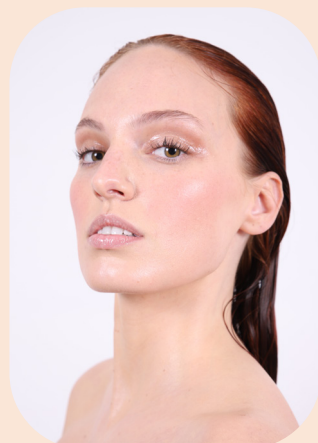
Units of Competency

- Design, Apply & Remove Makeup
- Design & Apply Makeup for Photography (colour + black and white)
- Design & Apply Remedial Camouflage Makeup
- Design, Apply & Remove Creative Makeup
- Contribute to Health and Safety of Self and Others
- Advise on Beauty Products & Services
- Provide Salon / Studio Services to Clients
- Provide Lash & Brow Services
- Use Social Media Tools for Collaboration and Engagement
- Market the Small Business
- Monitor & Manage Small Business Operations
- Work Collaboratively on Makeup Productions

Course Content

- Corrective Makeup via Contouring & Shading for various Face Shapes
- Colour Concepts for Makeup Artists
- Creating Face Charts
- Designing a Makeup Plan
- Selection of Equipment & Tools of the Trade
- Skin Care Knowledge for Makeup Artists
- Research Beauty Industry Information via Retail Excursion
- Perform Routine Housekeeping Duties
- Shaping and Colouring Lashes & Brows
- Day Makeup
- Evening Makeup
- False Lash Application
- History of 20th Century Makeup Overview
- Special Occasion Makeup (e.g. Bridal / Wedding / Mature Makeup / Males / Cultural Makeup / Basic SFX / Character Looks / Theatrical Looks)
- Beauty Editorial Makeup
- Fashion Editorial & Runway Makeup
- Red Carpet Makeup
- Etiquette for Working Professionally on a Photo Shoot
- Managing your Social Media
- Business / Workplace Communication & Service Requirements
- Managing your Freelance Makeup Artistry Business
- Industry Networking







Professional Makeup Artist Course

Enrolment Application (16 Week Course)



☐ **Monday 7 February to Wednesday 25 May 2022**

☐ **Monday 8 August to Wednesday 23 November 2022**

(Please tick desired course date)

Name: Date of Birth:

Street Address:

Suburb: Postcode:

Phone (Home): Phone (Mobile):

Email Address: Facebook:

Instagram: LinkedIn:

Website: Blog:

Payment Type: (Please tick your payment type)

☐ **Full Payment**

\$2999 on enrolment

☐ **Payment Plan**

\$1499 on enrolment, \$500 due on Week 1, then

\$100 per week from Week 2 through to Week 11

☐ **Extended Payment Plan**

\$799 on enrolment, then \$100 from the following week for 22 consecutive weeks

Terms and Conditions: (Please read the terms and conditions and tick that you agree)

- Your full payment of \$2999 or \$1499/\$799 first payment must be returned together with this Enrolment Application completed & attached. Scan and email this form to iconschoolofmakeup@gmail.com or print and mail to **Attn: Karl, ICON School of Makeup, 521 Hunter Street, Newcastle NSW 2300.**
- If you choose the Payment Plan option, the initial installment of \$1499 is to be received on enrolling. Then \$500 is due on week one, and then \$100 per week from week 2 through to week 11.
- If you choose the Extended Payment Plan option, the initial installment of \$799 is to be received on enrolling. Then \$100 from the following week for 22 consecutive weeks.
- If you terminate your attendance to the course, then all fees paid will be forfeited by the payer. A credit of the amount received less a \$150 administration fee will be given towards a follow up course, if requested. This credit is to be used within 12 months from your initial termination of attendance.
- After your payment has been received you will be sent a Tax Invoice.
- If you are paying by credit card, all payments must be made on the due date as per the students signed agreement to the Terms & Conditions. It is the students responsibility to make payments as per Payment Plan method specified by yourself on the date scheduled.
- If a payment is late, you will not be allowed to attend until you make that outstanding payment. You may return to class once this fee is paid.
- The enrolled student is responsible for all payments, regardless of whether they are made by you or by a third party. If a payment from yourself or a third party is dishonoured, it is the students' responsibility to make this payment including a reimbursement to ICON of the bank fee for dishonoured payments @ \$20 each.
- NOTE: As the ICON Professional Makeup Artist Course runs over 16 weeks, it is preferable if the EPP option begins 12 weeks prior to the start of the course and finishes at week 16, ensuring you will receive your Certificate of Completion once you've been assessed as competent.
- If a student has outstanding fees at the completion of their course, they will not be eligible to receive their qualification until all outstanding course fees are paid.

☐ I have read and agree to the above terms and conditions.

Payment Method: (Please tick your payment method)

☐ **Direct Deposit**

Deposit into bank account:

Account Name: ICON BSB: 802985 Account Number: 117480091

☐ **Credit Card (not AMEX or Diners Card)**

Please contact Karl on 0432 510 698 to organise your credit card payment.

Signatures: Your signature attests to your agreement to carry out the payment terms as listed above.

Student Signature:

Parent/Guardian Signature
(if under 18 years of age):

Application Approved
by School Director:

.....

Date: Date: Date: